

A modern outdoor patio at night. In the foreground, there is a dark blue rectangular fire pit with a bright fire burning inside. To the right of the fire pit is a light blue modular sectional sofa. The patio is surrounded by lush green plants and bamboo. In the background, there is a large, illuminated, abstract sculpture that looks like a stylized 'Y' or a modern fountain. The overall atmosphere is sophisticated and contemporary.

# “I don’t like nature”

(re) defining nature, for equitable health and wellbeing

Dr Bridget Snaith CMLI, Anna Peters.

# nature is good for us



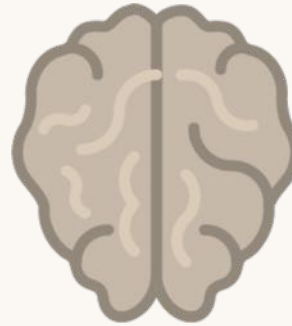
climate change

air /water  
quality

biodiversity



Passive Benefits



improved  
cognitive  
function

less pain  
relief



Interactive Benefits



reduction  
in stress

more  
exercise

decreased  
blood pressure





**60% BAME Catchment**

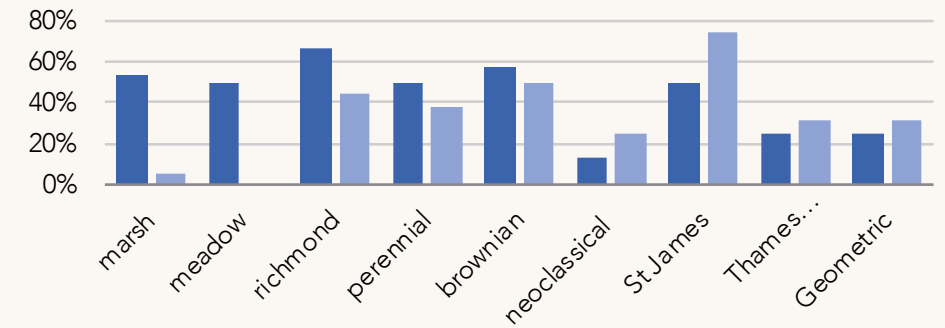
**23% BAME Users North Park**  
**April-September 2014**  
**(1,057 users counted)**

*(Snaith 2015)*

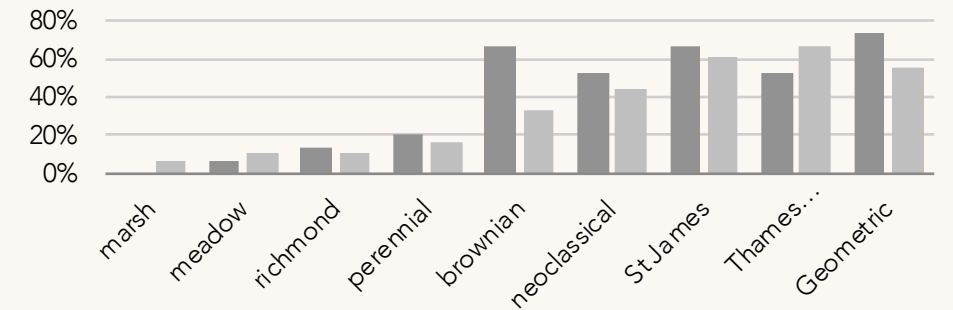
# is love of nature universal?



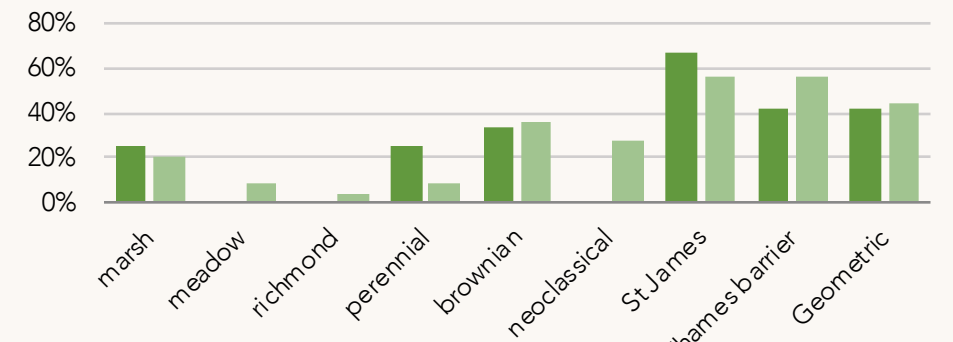
# is this nature?



British White uni (24) non uni (16)



Caribbean uni (15) non uni (18)



Bangladeshi uni (12) non uni (25)



# is this nature?



**60% BAME Catchment**

**52% BAME Users South Park**  
**April-September 2014**  
(2,017 users counted)

(Snaith 2015)

# nature's interactive benefits: who visits the natural environment?



A horizontal bar chart with two green bars. The top bar is longer and contains the text '74%'. The bottom bar is shorter and contains the text '56%'. To the right of each bar is a text label describing the group.

**74%**

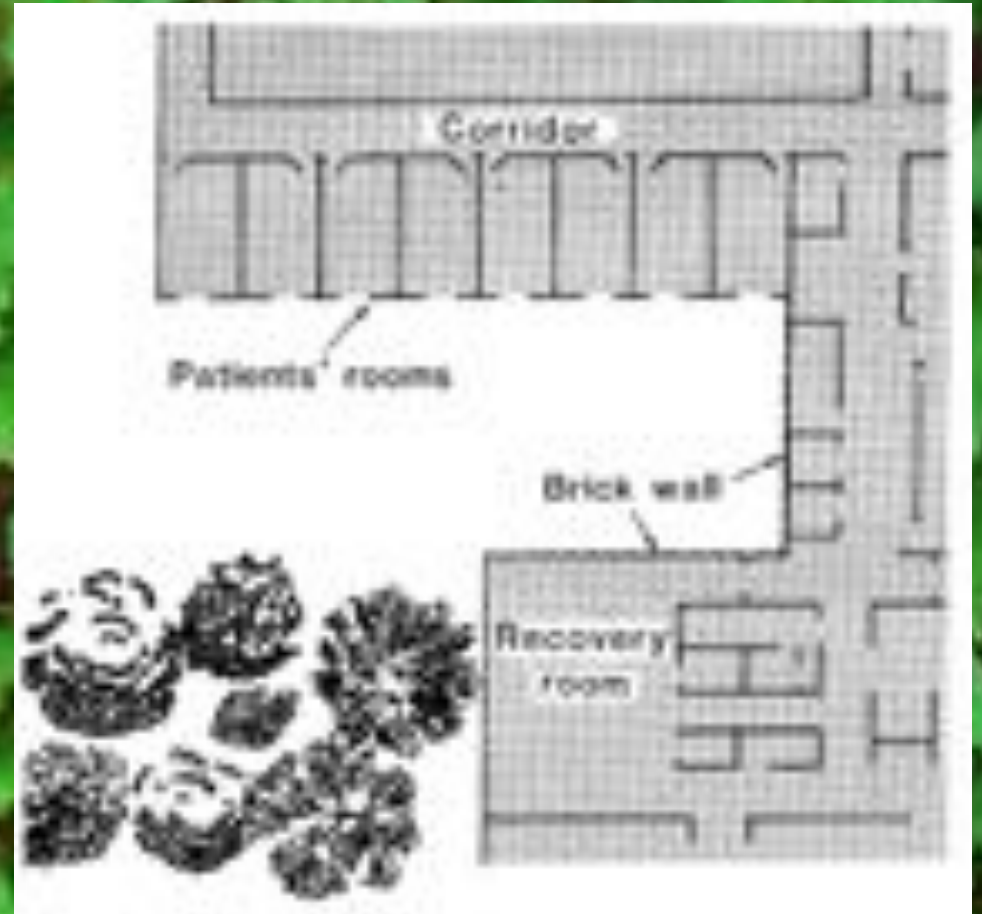
Under 16s in white  
households visit the natural  
environment once per week

**56%**

Under 16s in BAME  
households visit the natural  
environment once per week



# is this nature?



View through a window: patients recover faster when they see 'nature'  
*Ulrich, 1984*



# is this nature?



BBC Earth:  
'how nature is good for health and happiness' (2016)



culture is not uniform  
nature is constructed  
space is contested



*Heidi's Photo, Chalet Interlaken*

# Thematic analysis:

## unappealing nature VS appealing nature

Not for people like me

Inclusive

Dirty / unhygienic

Clean

Frightening

Safe

Stressful

Relaxing

Boring

Fun / beautiful



# Unappealing nature for BAME groups



Thematic analysis of x5 Focus Groups with BAME groups  
Snaith, 2015

# Appealing nature for BAME groups





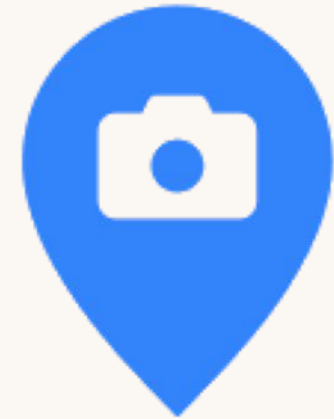
interactions with nature depend on  
whether the space is seen as:



**viable**



**healthful**



**interesting**

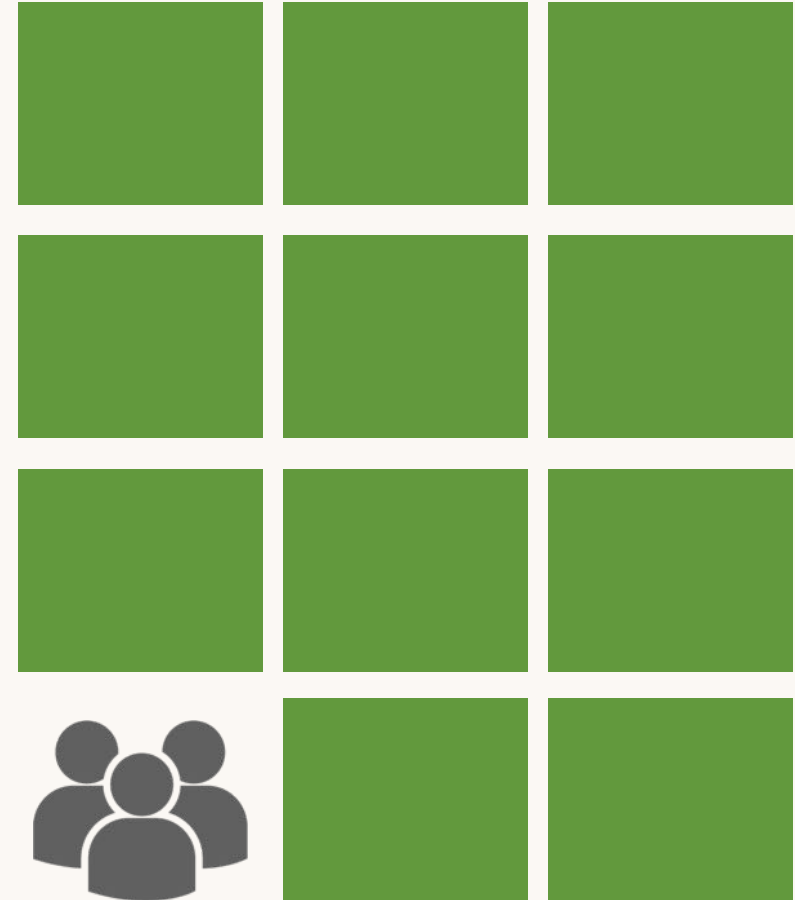
# viability

There is a distinct lack of green space in areas with larger BAME populations.

Even when green space is available it may not be viable for certain groups to utilise it.



areas with greater numbers of BAME residents



areas with greater numbers of white residents

In areas where 40%+ are BAME there is x11 less green space compared to areas where residents are largely white

*Urban Green Nation, CABE 2010*



# healthful

A word cloud centered around the word 'Safe'. The word 'Safe' is the largest and most prominent. Other words include 'No Dogs', 'Multicultural', 'Families', 'Clean', 'Orderly', 'Neat', 'Security', 'Busy', 'Park', 'Garden', 'Children', 'Wide', 'Protect', 'Manicured', 'Nice Condition', 'Everyone', 'Tidy', 'Comfortable', 'Womens', 'International', 'Open', 'Close', 'Wardens', 'Cordoned', and 'Fresh Water'.

A word cloud centered around the word 'Fresh'. The word 'Fresh' is the largest and most prominent. Other words include 'Air', 'Clean', 'Waterfall', 'Monsoon', 'Outside', 'Open Air', 'Fresh Water', 'Niceforeyes', 'Greenery', 'Greenfields', 'Green', 'Trees', 'Grass', 'Fields', and 'Clean'.

interesting



Thematic analysis of x5 Focus Groups with BAME groups  
Snaith, 2015





**45% BAME**  
catchment

**100+**  
languages

**<20yrs**  
25% of population

Ashburton Park - Croydon

# Top reasons for visiting Croydon greenspace: white averages

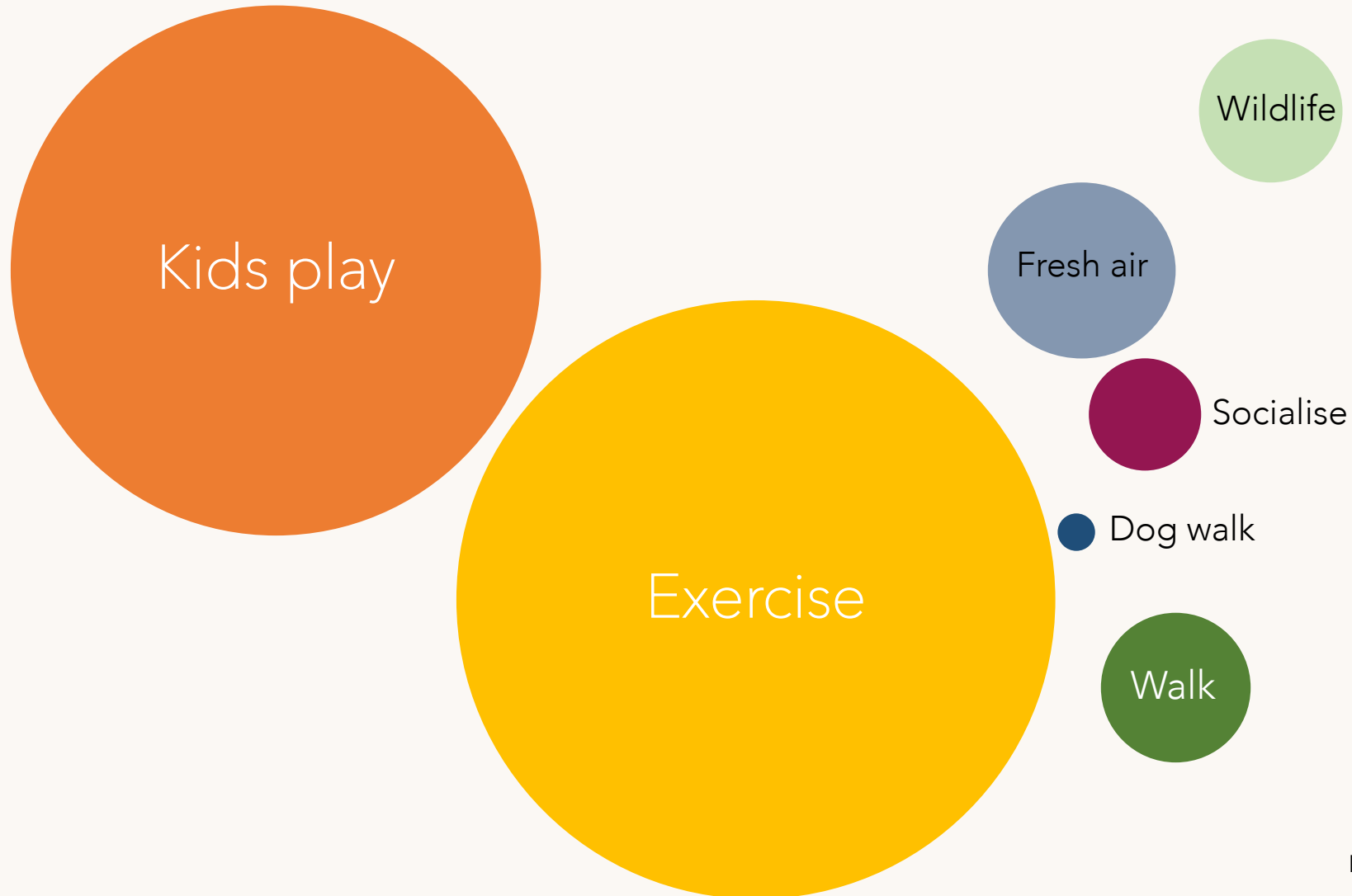




# Top reasons for visiting Croydon greenspace: asian averages

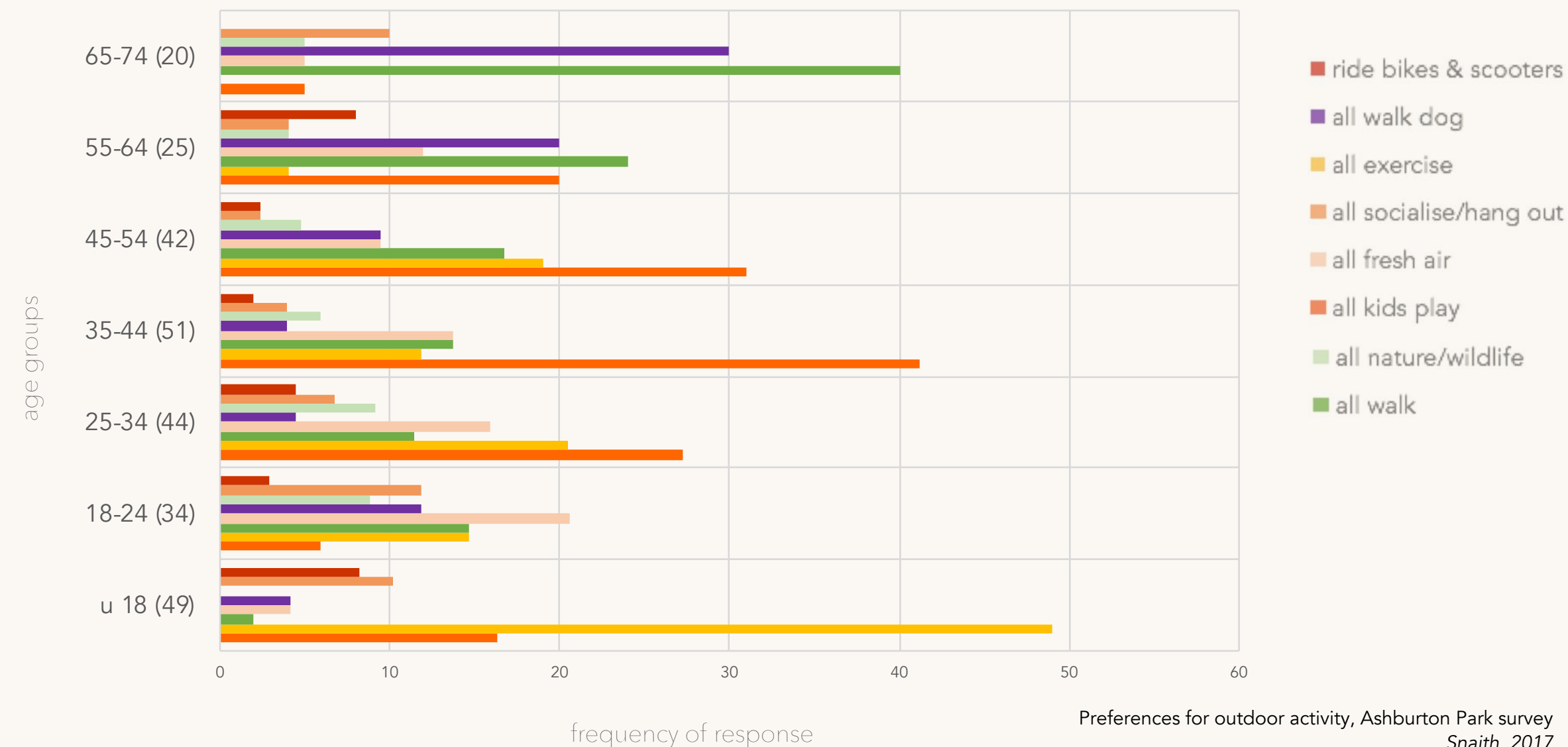


# Top reasons for visiting Croydon greenspace: black averages





# Top reasons for visiting Croydon greenspace: by age group





Aberdeen Royal Infirmary, Scotland



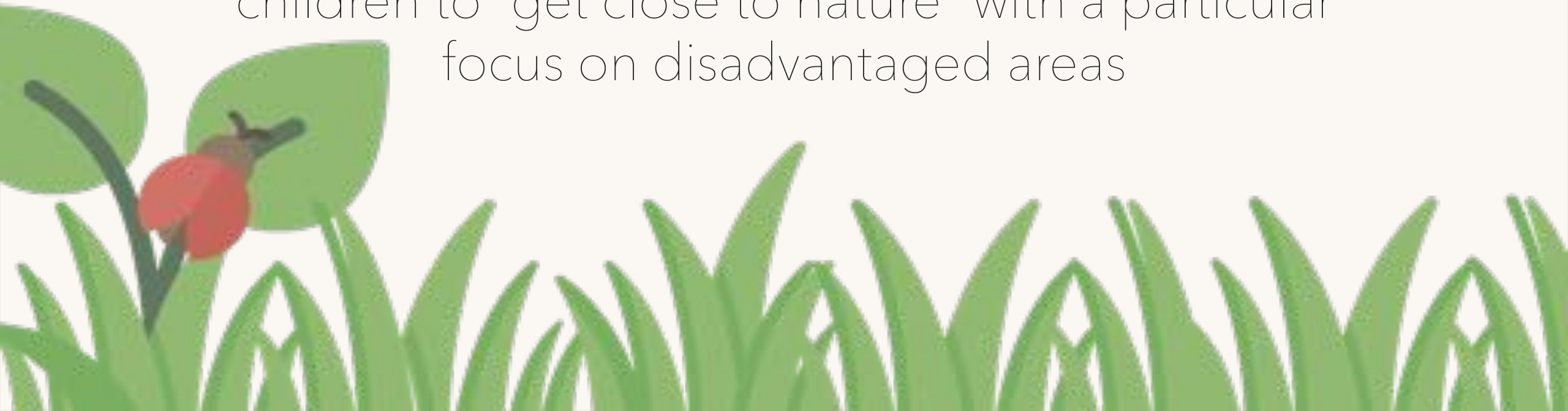
"We had to make changes to accommodate the hospital population...oncology patients cannot tolerate strong scented flowers "



# £10 million



funding will be dedicated to encouraging children to "get close to nature" with a particular focus on disadvantaged areas



is love of nature universal?

Is it good for everyone?

Only if we recognise that  
we access, perceive,  
interact with & value nature  
differently.

"Each city must explore the most effective & appropriate ways to integrate nature given its own unique natural settings & qualities"



"Each city must explore the most effective & appropriate ways to integrate nature given its own unique ~~natural~~<sup>human</sup> & settings & qualities"